

Glydea™

E X P A N D I N G H O R I Z O N S



2012-2013 CATALOGUE

Electric curtain track system

HOME MOTION by
somfy®

CONTENTS

Glydea™, added value in a demanding market	p. 4
Glydea™, the difference is in the detail	p. 6
Glydea™, flexibility is the rule	p. 8
Glydea™ 60e traversing capacity	p. 9
Technical specification	p. 10
Bracket dimensions	p. 11
Motor and rail dimensions	p. 12
Rail systems – Standard, Ripple & Ripple Butt	p. 14
Parts list	p. 16
RTS control	p. 18
Infrared control	p. 19
Contact closure control	p. 20
230Vac switched control	p. 21
Order forms	p. 22



Glydea™ the perfect solution



The Glydea™ electric curtain track system meets the requirements of the most prestigious projects.

Motorised curtains are a common feature in high-end projects such as high-quality hotels, luxury homes as well as meeting and conference venues.

Glydea™ is discreet, flexible and robust, offering the perfect solution for your electric curtain track project.

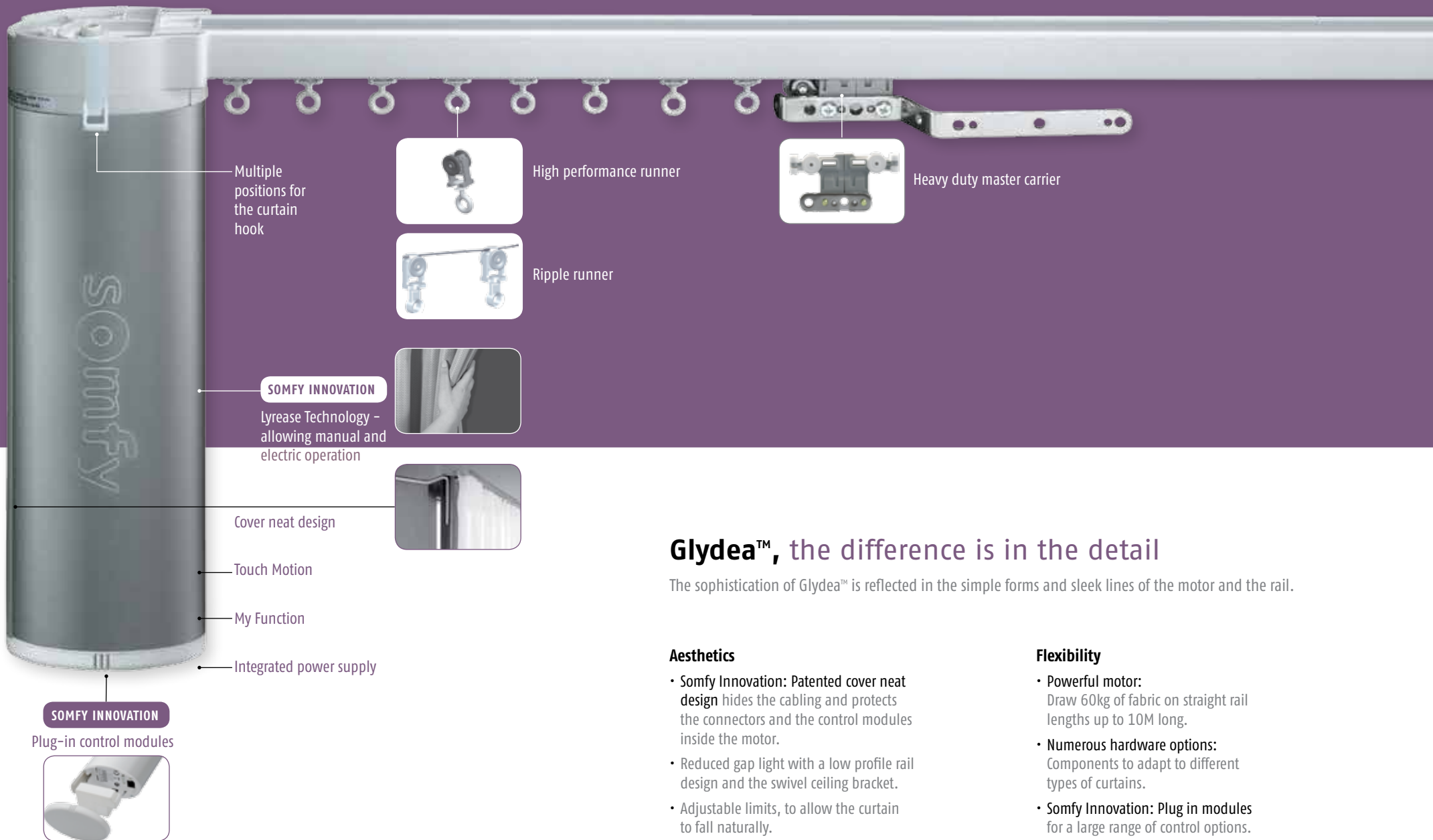
Glydea™, added value in a demanding market

The Glydea™ electric curtain track will make your offer stand out in terms of image, usage and functionality.

- Glydea™ improves the image of a room and provides a simple solution to commission and install.
- Glydea™ enhances the level of comfort for users and guests, exceeding expectations.
- The automated features of Glydea™ contributes towards energy savings and security (presence simulation).
- Glydea™ extends the lifespan of the curtains, preventing damage caused by manual operation.







Glydea™, the difference is in the detail

The sophistication of Glydea™ is reflected in the simple forms and sleek lines of the motor and the rail.

Aesthetics

- Somfy Innovation: Patented cover neat design hides the cabling and protects the connectors and the control modules inside the motor.
- Reduced gap light with a low profile rail design and the swivel ceiling bracket.
- Adjustable limits, to allow the curtain to fall naturally.

Flexibility

- Powerful motor: Draw 60kg of fabric on straight rail lengths up to 10M long.
- Numerous hardware options: Components to adapt to different types of curtains.
- Somfy Innovation: Plug in modules for a large range of control options.



High quality rail



One touch ceiling bracket:
easy installation



Swivel ceiling bracket:
minimum light gap

High quality belt

Motor can be positioned
on either side

Quiet

- Low noise level (<44 dB(A)), due to the motor design and the use of a high quality belt.
- Soft start and soft stop operation as standard.

Efficiency

- Touch Motion functionality, to open and close the curtain by pulling on the fabric.
- "My" function, to automatically control the curtain to a preferred intermediate position.
- Adjustable speed: 12.5 cm/s to 20 cm/s.

Robust Design

- Somfy Innovation: Lyrease mechanical system which disengages the motor drive shaft automatically for manual operation, protecting the motor and fabric.
- Setting buttons and cables are obscured from the end user.
- No maintenance is required after installation.

Glydea™, Somfy quality

Tested for 15 years of operation.
5 years international warranty.
International certifications.



Glydea™, flexibility is the rule

The flexibility of Glydea™ provides the solution for the most demanding projects.

Adaptability

- A large range of solutions, **with only one rail, two motors**, and several control modules.
- Straight and curved rail options along with standard and ripple wave systems.



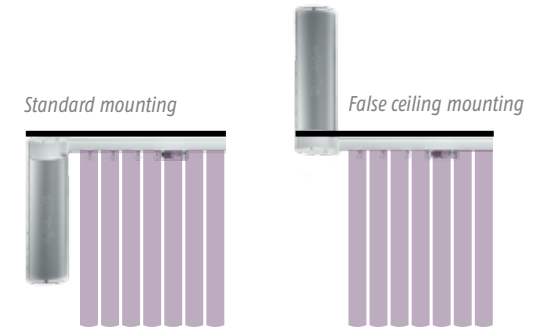
Universal



- Rail up to **10M long** (straight length).
- Bending radius from **300mm**.
- Large choice of rail shapes.
- Curtain weight up to **60 kg**.
- Large range of accessories to adapt to different types of curtains.

Easy installation

- From plug and play to more advanced solutions.
- Motor can be top mounted and hidden in false ceilings.
- Motor can be positioned on the left or right side and changed on site.
- Automatic or adjustable limit setting.
- One touch or swivel ceiling bracket.
- Integrated 24V power supply.



Choice of control systems



Standard compatibilities

- Dry volt contact closure control.
- 230V mains switching.
- Open/close or open/close/stop push button switches.
- Somfy or universal infrared control.



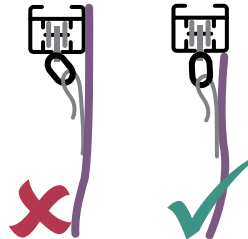
Glydea™ can be equipped with plug in modules to interface with third party control systems

RTS module:
compatible with all the Somfy RTS controls.

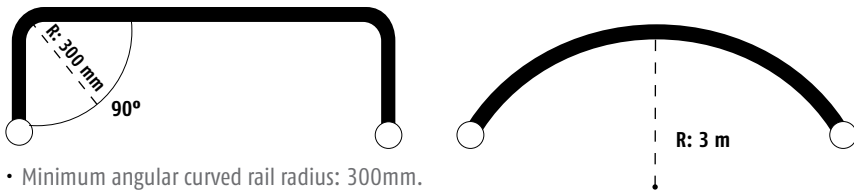
Motor load capacity according to rail opening, shape & length

In the Glydea™ traversing capacity chart to the right, we state the maximum curtain fabric weight that can be drawn by the Glydea™ 60e system depending on the rail specification and length.

The traversing capacity indicated is based on a system with no additional friction created by stress on the rail runners or the curtain fabric touching the rail or pelmet.

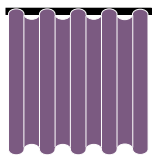


Track bending and curving minimum radius



- Minimum angular curved rail radius: 300mm.
- Minimum continuous curved rail radius: 3000mm.
- Maximum weight per runner: 1.5 kg.
- Maximum distance between runners: 10 mm.

Ripple system



When a curtain ripple or wave system is required, there are 3 options of curtain 'fullness' to choose from:

- 48mm pitch - this provides 120% curtain fullness.
- 54mm pitch - this provides 100% curtain fullness.
- 60mm pitch - this provides 80% curtain fullness.

Traversing capacity for Glydea™ 60e systems

		Rail Type	6M	10M
Straight	One way or side opening system		60kg	60kg
	Two way or central opening system		60kg	60kg
Angular Curve	One way or side opening system		45kg	45kg
	Two way or central opening system		45kg	45kg
	One way or side opening system		35kg	25kg
	Two way or central opening system		35kg	25kg
Continuous Curve	One way or side opening system		35kg	8M 25kg
	Two way or central opening system		30kg	8M 20kg

Glydea 60e specification

Technical overview

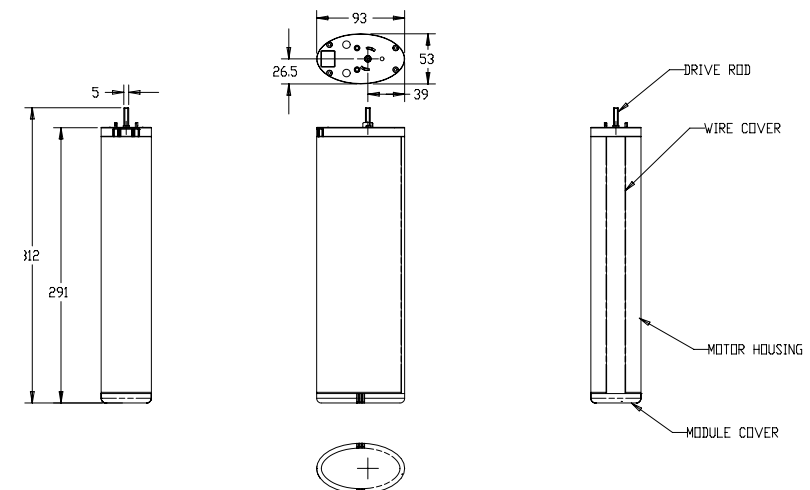
	Glydea™ 60e DCT	Glydea™ 60e WT ¹⁾
Motor unit characteristics		
Soft start	•	•
Soft stop	•	•
Intermediate position	•	
Manual operation	•	•
Touch motion	•	
Automatic limits on end stop	•	•
Back release		•
Adjustable limits	•	
Speed control & adjustment	•	•
Control options		
230V A/C switching		•
3 NO dry contacts	•	
2 NO dry contacts	•	
2 NO dry contact sequencing mode	•	
Dry contact individual, group & master control	•	
Infrared	•	
Radio Technology Somfy	•	•
Sun control	•	
Timer control	•	•
Installation and settings features		
Setting with buttons on motor unit	•	•
Setting with external 3 no dry contact switch	•	•
LED indicators	•	•
Motor unit direction change	•	•
Factory reset	•	•
Upside down mounting	•	•
Tracks / Curtain types		
Side or one-way	•	•
Central or two-way	•	•
Asymmetric	•	•
Multiple	•	•
Classic (Pinch pleat)	•	•
Ripple wave with overlap arm	•	•
Ripple wave with butt arm	•	•

Motor & Rail Characteristics

	Glydea™ 60e DCT	Glydea™ 60e WT
Power supply	90 V to 255 V	
Average linear speed	12.5 / 15 / 17 / 20 cm/s	
Power consumption	120 W	
Power cable type	3-wire cable	4-wire cable
Control connector type	RJ12	
Control circuit voltage	3.3 VDC	90 V to 250 V AC
Motorised rail noise level*	44 dB(A)*	
Certifications	c TUV us, CCC, CE, C-	
Maximum rail length	10M	
Minimum bending radius	300 mm	

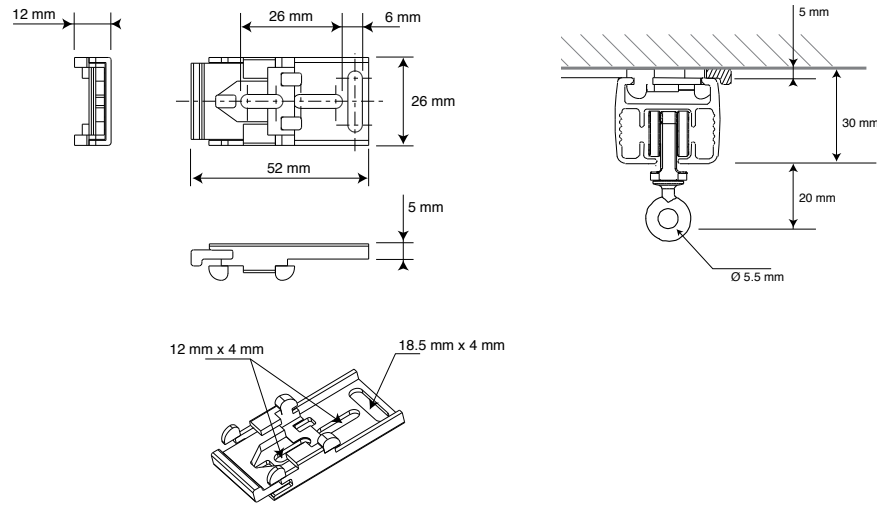
* Sound pressure level according to Somfy measurement standard at 15cm/s.

Motor dimensions (mm)

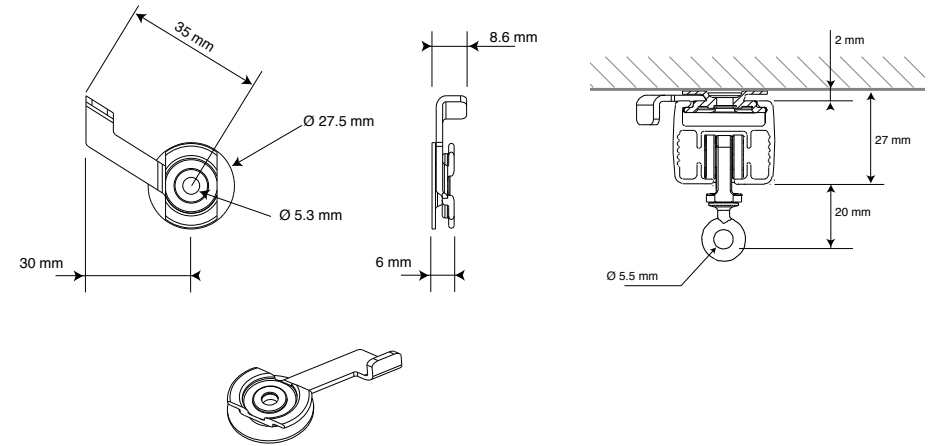


Bracket Dimensions

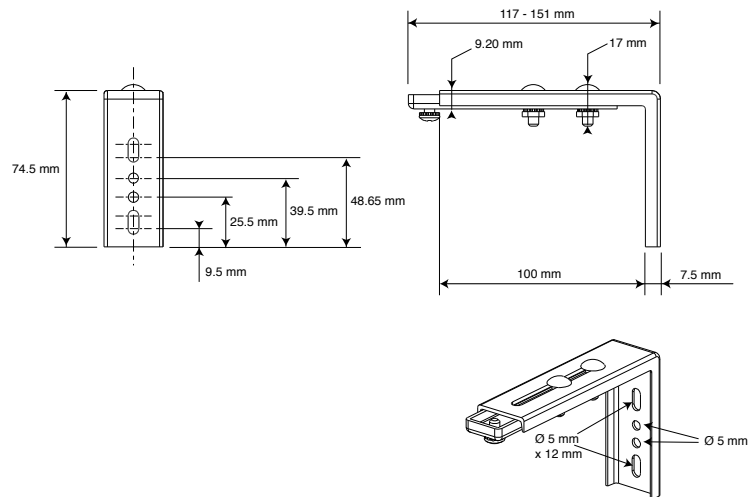
One Touch Ceiling Bracket



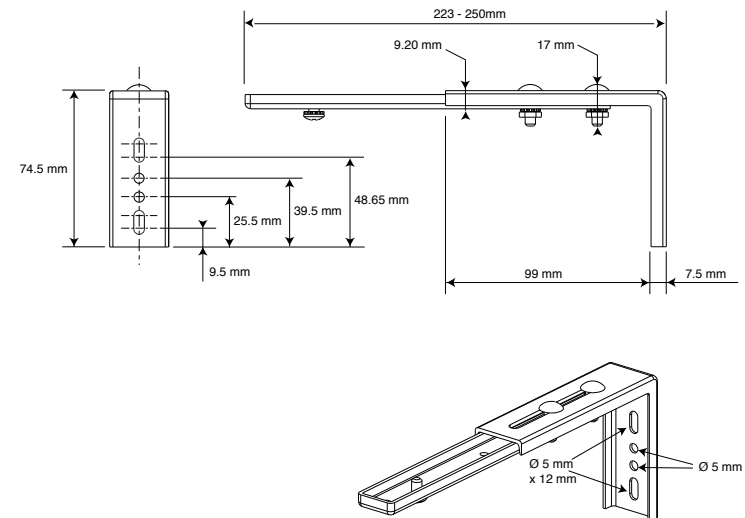
Swivel Ceiling Bracket



Adjustable wall mount bracket

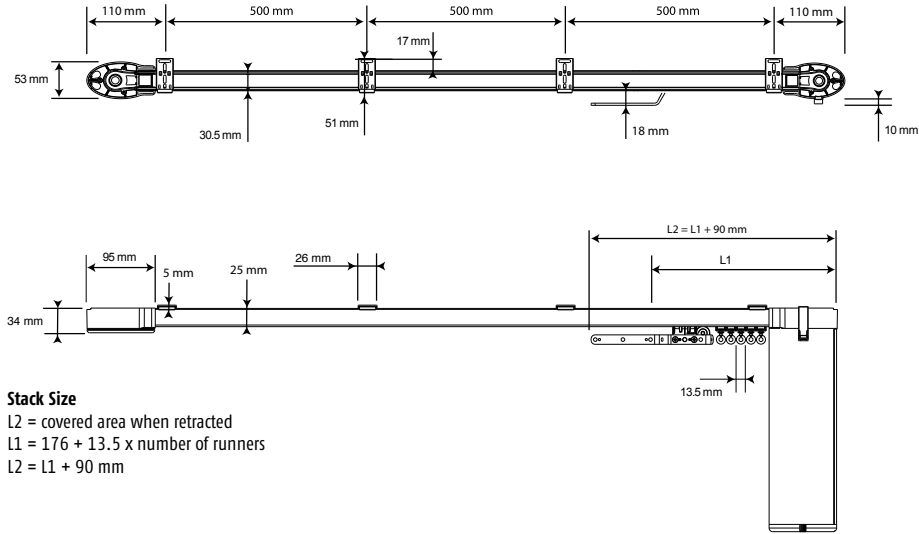


Double adjustable wall mount bracket



Motor & Rail Dimensions – Standard System

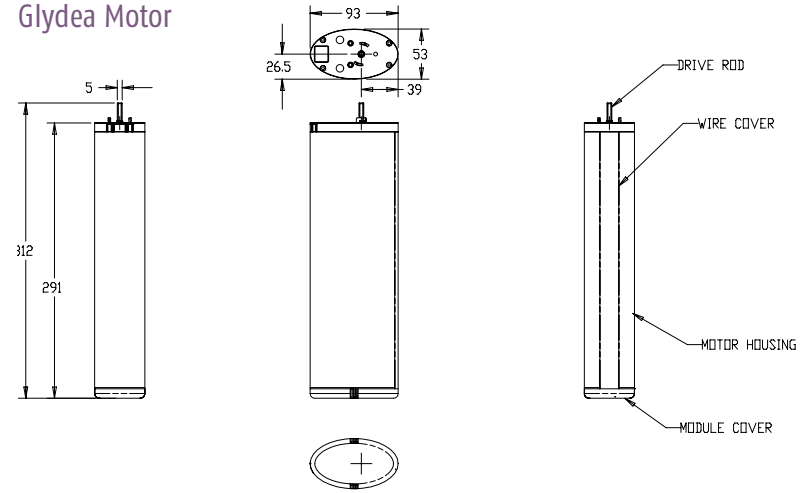
One way (side) opening STANDARD rail system



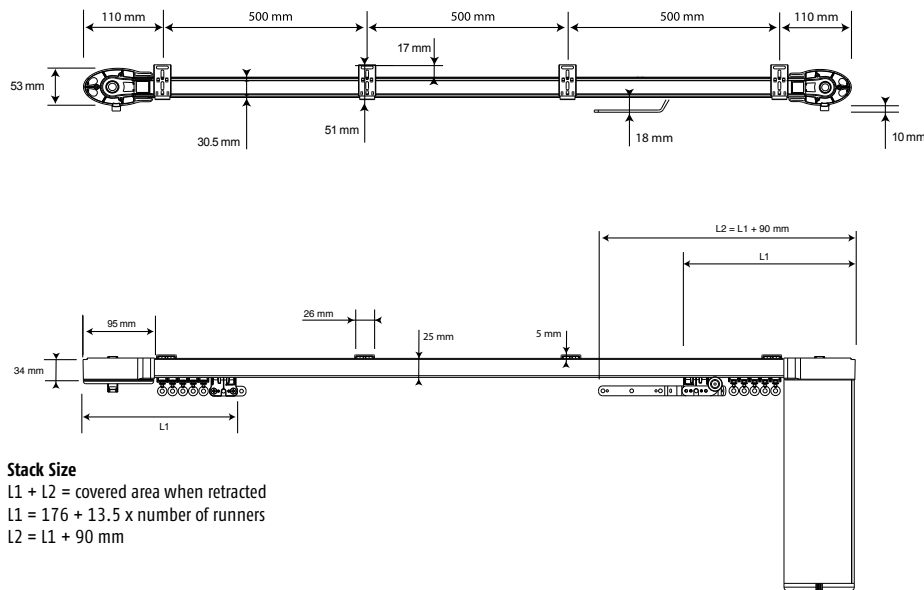
Stack Size

L2 = covered area when retracted
 L1 = 176 + 13.5 x number of runners
 L2 = L1 + 90 mm

Glydea Motor



Two way (central) opening STANDARD rail system

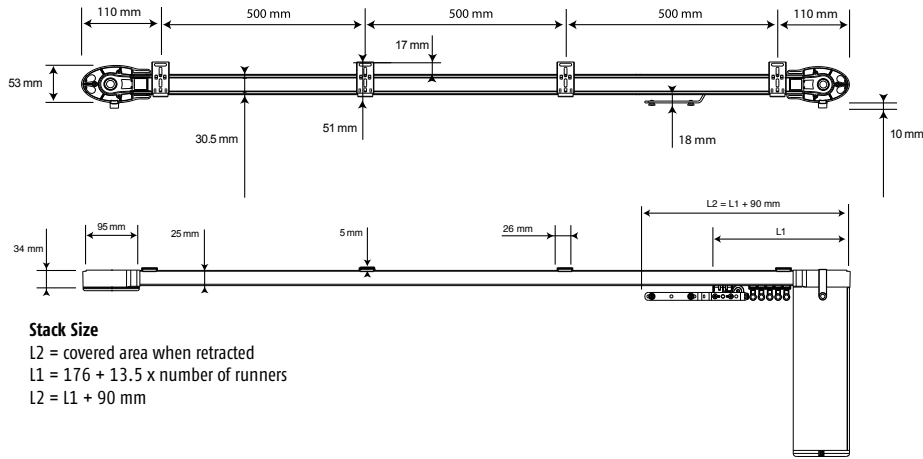


Stack Size

L1 + L2 = covered area when retracted
 L1 = 176 + 13.5 x number of runners
 L2 = L1 + 90 mm

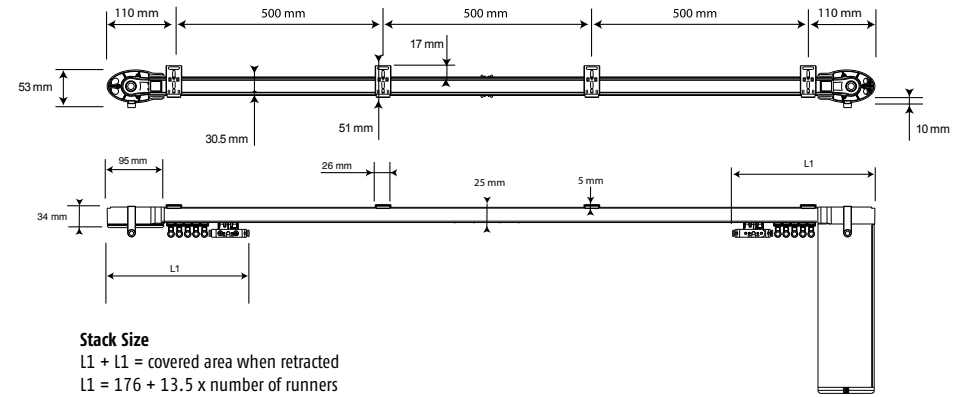
Motor & Rail Dimensions – Ripple System

One way (side) opening RIPPLE rail system

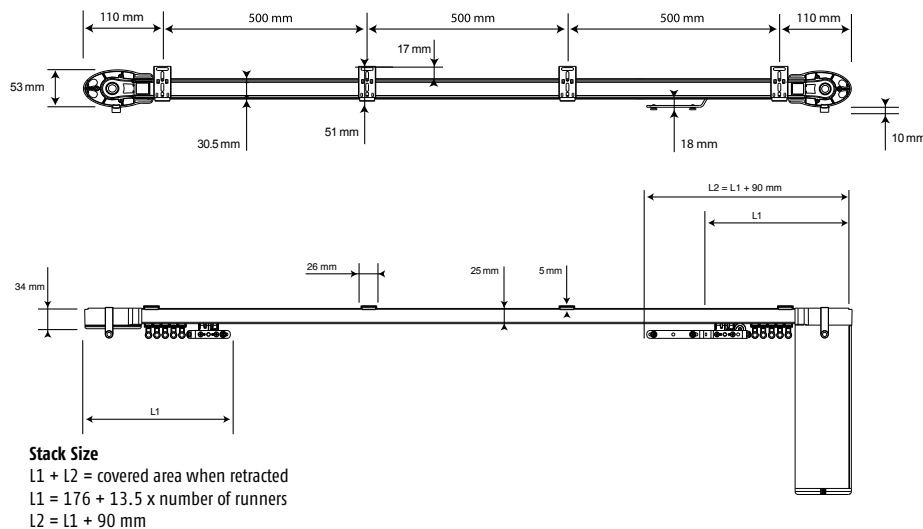


Motor & Rail Dimensions – Ripple Butt System

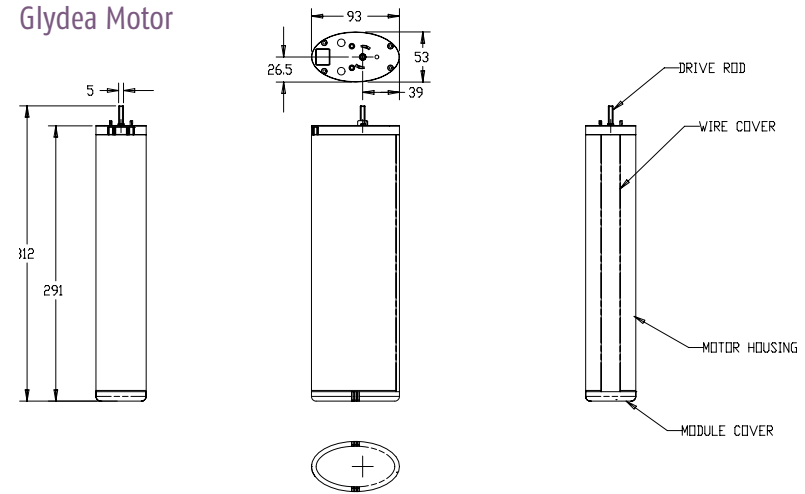
Two way (central) opening RIPPLE BUTT rail system



Two way (central) opening RIPPLE rail system



Glydea Motor



Rail Systems

Standard Rail System

The STANDARD rail systems are fabricated with the following components:



One way (side opening) STANDARD rail system		
Item	Description	Quantity
Runner	High performance runner	See table below
Rail	Glydea™ rail	= rail length
Belt	High performance belt	Rail length x 2
Pulley	Drive pulley	1
	Pulley	1
Master carrier	Heavy duty master carrier	1
Arm	Heavy duty overlap arm	1
Hook	Curtain hook	2



Two way (central opening) STANDARD rail system		
Item	Description	Quantity
Runner	High performance runner	See table below
Rail	Glydea™ rail	= rail length
Belt	High performance belt	Rail length x 2
Pulley	Drive pulley	1
	Pulley	1
Master carrier	Heavy duty master carrier	2
Arm	Heavy duty overlap arm	1
Hook	Curtain hook	4

Rail system reference numbers with components per length (rail joint used in rail systems >5M length):

Rail length (M)	Reference	Runners	Curtain Hooks	Brackets required per system (ceiling and wall)
0.50 - 1.00	1 781 804	8	2	3
1.01 - 1.50	1 781 283	13	2	4
1.51 - 2.00	1 781 284	18	2	5
2.01 - 2.50	1 781 285	23	2	6
2.51 - 3.00	1 781 286	28	2	7
3.01 - 3.50	1 781 287	33	2	8
3.51 - 4.00	1 781 288	38	2	9
4.01 - 4.50	1 781 289	43	2	10
4.51 - 5.00	1 781 290	48	2	11
5.01 - 5.50	1 781 291	53	2	12
5.51 - 6.00	1 781 292	58	2	13
6.01 - 6.50	1 781 293	63	2	14
6.51 - 7.00	1 781 294	68	2	15
7.01 - 7.50	1 781 295	73	2	16
7.51 - 8.00	1 781 296	78	2	17
8.01 - 8.50	1 781 297	83	2	18
8.51 - 9.00	1 781 298	88	2	19
9.01 - 9.50	1 781 299	93	2	20
9.51 - 10.0	1 781 300	98	2	21

Rail length (M)	Reference	Runners	Curtain hooks	Brackets required per system (ceiling and wall)
0.50 - 1.00	1 781 806	10	4	3
1.01 - 1.50	1 781 311	14	4	4
1.51 - 2.00	1 781 312	20	4	5
2.01 - 2.50	1 781 313	24	4	6
2.51 - 3.00	1 781 314	30	4	7
3.01 - 3.50	1 781 315	34	4	8
3.51 - 4.00	1 781 316	40	4	9
4.01 - 4.50	1 781 317	44	4	10
4.51 - 5.00	1 781 318	50	4	11
5.01 - 5.50	1 781 319	54	4	12
5.51 - 6.00	1 781 320	60	4	13
6.01 - 6.50	1 781 321	64	4	14
6.51 - 7.00	1 781 322	70	4	15
7.01 - 7.50	1 781 323	74	4	16
7.51 - 8.00	1 781 324	80	4	17
8.01 - 8.50	1 781 325	84	4	18
8.51 - 9.00	1 781 326	90	4	19
9.01 - 9.50	1 781 327	94	4	20
9.51 - 10.0	1 781 328	100	4	21

Ripple Rail System

The RIPPLE rail systems are fabricated with the following components:



One way (side opening) RIPPLE rail system		
Item	Description	Quantity
Ripple Runner	Ripple runner - 48mm	See table below
	Ripple runner - 54mm	See table below
	Ripple runner - 60mm	See table below
Rail	Glydea™ rail	= rail length
Belt	High performance belt	Rail length x 2
Pulley	Drive pulley	1
	Pulley	1
Master carrier	Heavy duty master carrier	1
Arm	Ripple overlap arm	1
Hook	Ripple curtain hook	2



Two way (central opening) RIPPLE rail system		
Item	Description	Quantity
Ripple Runner	Ripple runner - 48mm	See table below
	Ripple runner - 54mm	See table below
	Ripple runner - 60mm	See table below
Rail	Glydea™ rail	= rail length
Belt	High performance belt	Rail length x 2
Pulley	Drive pulley	1
	Pulley	1
Master carrier	Heavy duty master carrier	2
Arm	Ripple overlap arm	1
	Ripple straight arm	1
Hook	Ripple curtain hook	4



Two way (central opening) RIPPLE BUTT rail system		
Item	Description	Quantity
Ripple Runner	Ripple runner - 48mm	See table below
	Ripple runner - 54mm	See table below
	Ripple runner - 60mm	See table below
Rail	Glydea™ rail	= rail length
Belt	High performance belt	Rail length x 2
Pulley	Drive pulley	1
	Pulley	1
Master carrier	Heavy duty master carrier	2
Arm	Ripple butt arms	1
Hook	Ripple curtain hook	4

Rail system reference numbers with components per length (rail joint used in rail systems >5M length):








Rail length (M)	Reference	Runners 48mm	Runners 54mm	Runners 60mm	Curtain Hooks	Brackets required
0.50 - 1.00	1 781 807	20	18	16	2	3
1.01 - 1.50	1 781 808	30	28	24	2	4
1.51 - 2.00	1 781 809	42	36	34	2	5
2.01 - 2.50	1 781 810	52	46	42	2	6
2.51 - 3.00	1 781 811	62	56	50	2	7
3.01 - 3.50	1 781 812	72	64	58	2	8
3.51 - 4.00	1 781 813	84	74	66	2	9
4.01 - 4.50	1 781 814	94	84	76	2	10
4.51 - 5.00	1 781 815	104	92	84	2	11
5.01 - 5.50	1 781 816	114	102	92	2	12
5.51 - 6.00	1 781 817	124	112	100	2	13
6.01 - 6.50	1 781 818	134	120	108	2	14
6.51 - 7.00	1 781 819	146	130	116	2	15
7.01 - 7.50	1 781 820	156	138	126	2	16
7.51 - 8.00	1 781 821	166	148	134	2	17
8.01 - 8.50	1 781 822	176	158	142	2	18
8.51 - 9.00	1 781 823	188	166	150	2	19
9.01 - 9.50	1 781 824	198	176	158	2	20
9.51 - 10.0	1 781 825	208	186	166	2	21

Rail length (M)	Reference	Runners 48mm	Runners 54mm	Runners 60mm	Curtain Hooks	Brackets required
0.50 - 1.00	1 781 836	20	18	16	4	3
1.01 - 1.50	1 781 837	30	28	24	4	4
1.51 - 2.00	1 781 838	42	36	34	4	5
2.01 - 2.50	1 781 839	52	46	42	4	6
2.51 - 3.00	1 781 840	62	56	50	4	7
3.01 - 3.50	1 781 841	72	64	58	4	8
3.51 - 4.00	1 781 842	84	74	66	4	9
4.01 - 4.50	1 781 843	94	84	76	4	10
4.51 - 5.00	1 781 844	104	92	84	4	11
5.01 - 5.50	1 781 845	114	102	92	4	12
5.51 - 6.00	1 781 846	124	112	100	4	13
6.01 - 6.50	1 781 847	134	120	108	4	14
6.51 - 7.00	1 781 848	146	130	116	4	15
7.01 - 7.50	1 781 849	156	138	126	4	16
7.51 - 8.00	1 781 850	166	148	134	4	17
8.01 - 8.50	1 781 851	176	158	142	4	18
8.51 - 9.00	1 781 852	188	166	150	4	19
9.01 - 9.50	1 781 853	198	176	158	4	20
9.51 - 10.0	1 781 854	208	186	166	4	21





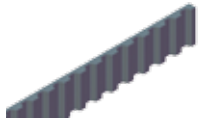







Rail length (M)	Reference	Runners 48mm	Runners 54mm	Runners 60mm	Curtain Hooks	Brackets required
0.50 - 1.00	1 781 865	20	18	16	4	3
1.01 - 1.50	1 781 866	30	28	24	4	4
1.51 - 2.00	1 781 867	42	36	34	4	5
2.01 - 2.50	1 781 868	56	46	42	4	6
2.51 - 3.00	1 781 869	62	56	50	4	7
3.01 - 3.50	1 781 870	72	64	58	4	8
3.51 - 4.00	1 781 871	84	74	66	4	9
4.01 - 4.50	1 781 872	94	84	76	4	10
4.51 - 5.00	1 781 873	104	92	84	4	11
5.01 - 5.50	1 781 874	114	102	92	4	12
5.51 - 6.00	1 781 875	124	112	100	4	13
6.01 - 6.50	1 781 876	134	120	108	4	14
6.51 - 7.00	1 781 877	146	130	116	4	15
7.01 - 7.50	1 781 878	156	138	126	4	16
7.51 - 8.00	1 781 879	166	148	134	4	17
8.01 - 8.50	1 781 880	176	158	142	4	18
8.51 - 9.00	1 781 881	188	166	150	4	19
9.01 - 9.50	1 781 882	198	176	158	4	20
9.51 - 10.0	1 781 883	208	186	166	4	21

Parts List









Motor and Controls / Control Accessories

	Glydea™ 60e DCT Electric curtain track motor with integral power supply. Cable tidy system for simplified cable routing during installation. 230Vac mains powered with RTS, Infrared and contact closure signal compatible via plug in modules. Ref. 1 001 265	Glydea™ RTS Module  Plug-in RTS receiver for use with Glydea™ 60e DCT. Ref. 1 870 172	DCT cable - 2.5M  Cable equipped with a RJ12 plug and bared wires. The RJ12 plugs directly into the Glydea™ and provides a dry contact signal option. Ref. 9 015 443	DCT setting tool  Tool for setting up the Glydea™ ready for operation. Use DCT cable (9015443) to link the setting tool to the Glydea™ motor. Ref. 9 014 599
	Glydea™ 60e WT Electric curtain track motor with integral power supply. Cable tidy system for simplified cable routing during installation. 230Vac mains switched motor via 4-core cable supply. Ref. 1 001 537	IR3 ILT Infrared Sensor  Infrared sensor, compatible with Somfy IR1 & IR8 IR transmitters. Supplied with RJ9 connection cable (requires RJ12 to RJ9 adapter). Ref. 9 154 205	RJ12 to RJ9 adapter  Converts a RJ12 socket into a RJ9 socket. This adapter is required when connecting the IR sensor directly into the Glydea™ motor. Ref. 9 014 068	DCT splitter Glydea™  Unit equipped with 2 x RJ12 socket inputs and a 4-way screw terminal blocks to simplify wiring connections. Ref. 9 015 442




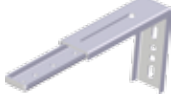

Track Components & Accessories

Rail 5M  5M length Glydea aluminium rail profile. White finish.	Pulley  Pulley assembly secured to the rail at the opposite side to the motor. White finish.	High performance rotating eye runner  High performance runner with removable eye outlet that rotates. White finish. Ref. 1 781 415	Motor bottom cover  Bottom cover for the motor. White finish. Ref. 9 015 579
High performance 10 mm belt  10 mm black pre-lubricated belt.	Drive pulley  Pulley assembly secured to the rail on the motor side. White finish.	Rail joint  Rail joint used to secure two lengths of rail together.	Pulley stopper assembly  Pulley stopper assembly. Ref. 1 780 954
Heavy duty overlap arm  Stainless steel overlap arm assembly with roller.	Heavy duty master carrier  Heavy duty master carrier.	Pulley cover  Pulley cover. White finish. Ref. 1 780 898	Standard curtain hook  Plastic hook placed on either pulley unit to secure each end of the curtain. White finish. Ref. 1 780 895

Ripple System

Ripple overlap arm kit	 <p>Stainless steel overlap arm assembly with roller. Fitted with studs to connect with the snap tape.</p>	Ripple straight arm	 <p>Stainless steel arm assembly. Fitted with studs to connect with the snap tape.</p>	Ripple butt arms kit	 <p>2 x stainless steel arm assemblies. Fitted with studs to connect with the snap tape.</p>	Ripple curtain hook	 <p>Ripple system curtain hook placed on either pulley unit to secure each end of the curtain. White finish.</p> <p>Ref. 1 780 905</p>
Ripple runner - 48mm pitch (120% fullness)	 <p>Runners linked by string with a 48mm pitch distance between each runner. Eye outlet connects to snap tape.</p> <p>Ref. 1 780 901</p>	Ripple runner - 54mm pitch (100% fullness)	 <p>Runners linked by string with a 54mm pitch distance between each runner. Eye outlet connects to snap tape.</p> <p>Ref. 1 780 902</p>	Ripple runner - 60mm pitch (80% fullness)	 <p>Runners linked by string with a 60mm pitch distance between each runner. Eye outlet connects to snap tape.</p> <p>Ref. 1 780 903</p>	Ripple snap tape	 <p>Length of snap tape to be used with the ripple system. Snap studs are positioned</p> <p>Ref. 1 782 301</p>

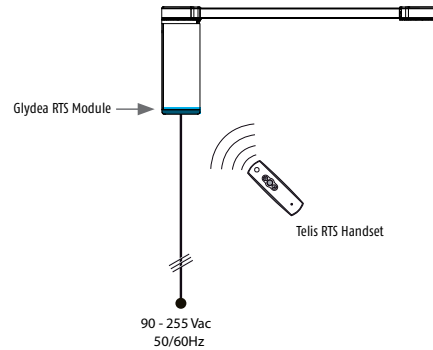
Brackets

Swivel ceiling bracket	 <p>Ceiling bracket providing reduced light gap between the rail and ceiling (max 2mm).</p> <p>Ref. 1 780 906</p>	One touch ceiling bracket	 <p>'Snap on' quick fit installation bracket. White finish.</p> <p>Ref. 1 780 907</p>	Adjustable wall mount bracket	 <p>Bracket with minimum 100 mm projection and 34 mm extension, for use with swivel or one touch ceiling brackets. White finish.</p> <p>Ref. 1 780 909</p>	Double adjustable wall mount bracket	 <p>Bracket to mount 2 rails with swivel or one touch ceiling brackets. 200 mm projection, 27 mm extension and 100 mm between rails. White finish.</p> <p>Ref. 1 780 910</p>
Ceiling fixing plate	 <p>Bracket that can be mounted on the rail prior to securing to the ceiling.</p> <p>Available on request</p>						

Glydea™ 60e DCT – RTS Control

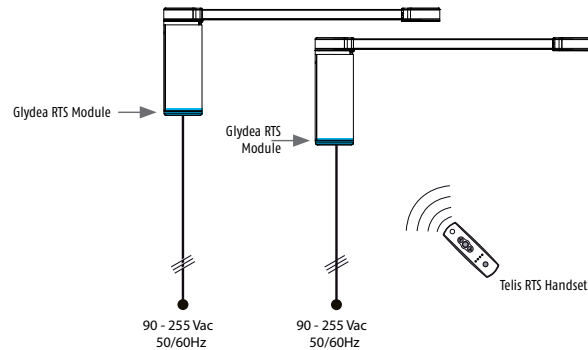
Individual control with remote handset or wall switch

Glydea™ DCT motor + Glydea™ RTS Module



Group & individual control with remote handset or wall switch

Glydea™ DCT motor + Glydea™ RTS Module



Smoove 1 Open/Close RTS



Single channel touch sensitive wall switch module (frames to be ordered separately).

Pure (White)	Ref. 1 811 011
Black Shine	Ref. 1 811 009

Smoove Wall Switch Frame



Frames to be used with Smoove RTS switch module.

Pure (White)	Ref. 9 015 022
Silver	Ref. 9 015 024
Silver Mat	Ref. 9 015 025
Black	Ref. 9 015 023
Light Bamboo	Ref. 9 015 027
Amber Bamboo	Ref. 9 015 026
Cherry	Ref. 9 015 036
Walnut	Ref. 9 015 037

Telis 1 RTS



Single channel RTS transmitter.

Pure	Ref. 1 810 630
Patio	Ref. 1 810 642
Silver	Ref. 1 810 637
Lounge	Ref. 1 810 649

Telis 4 RTS



Multi channel RTS transmitter.

Pure	Ref. 1 810 631
Patio	Ref. 1 810 644
Silver	Ref. 1 810 638
Lounge	Ref. 1 810 651

Telis 16 RTS



Sixteen channel RTS multi channel control.

Pure	Ref. 1 811 020
Silver	Ref. 1 811 021

Telis 6 Chronis RTS



Six channel RTS multi channel timer control.

Pure	Ref. 1 805 209
Silver	Ref. 1 805 210

Glydea™ RTS Module



Plug-in RTS receiver for use with Glydea™ 60e DCT.

Ref. 1 870 172

Sunis Indoor WireFree™ RTS



Indoor battery powered RTS sun sensor.

Ref. 9 013 707

ThermoSunis Indoor WireFree™ RTS



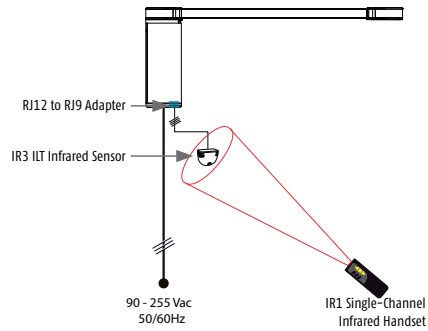
Indoor battery powered RTS sun & temperature sensor.

Ref. 9 013 708

Glydea™ 60e DCT – Infrared Control

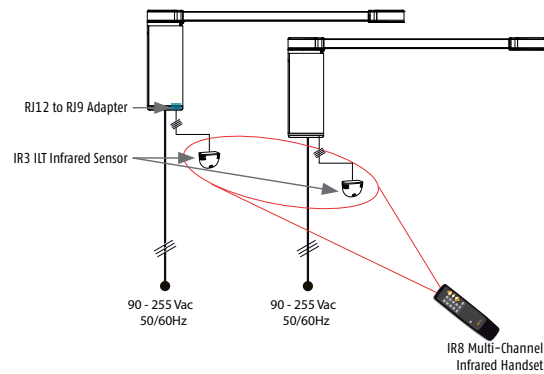
Individual control with remote handset

Glydea™ DCT motor + IR3 ILT Infrared Sensor



Group & individual control with remote handset

Glydea™ DCT motor + IR3 ILT Infrared Sensor



IR3 ILT Infrared Sensor



Infrared sensor, compatible with Somfy IR1 & IR8 IR infrared transmitters. Supplied with connection cable terminated with a RJ9 plug at either end (requires RJ12 to RJ9 adapter).

Ref. 9 154 205

RJ12 to RJ9 adapter



Converts a RJ12 socket into a RJ9 socket. This adapter is required when connecting the IR3 ILT infrared sensor directly into the Glydea™ 60e DCT motor.

Ref. 9 014 068

IR1



Single channel infrared remote handset.

Ref. 1 870 133

IR8



Multi channel infrared remote handset.

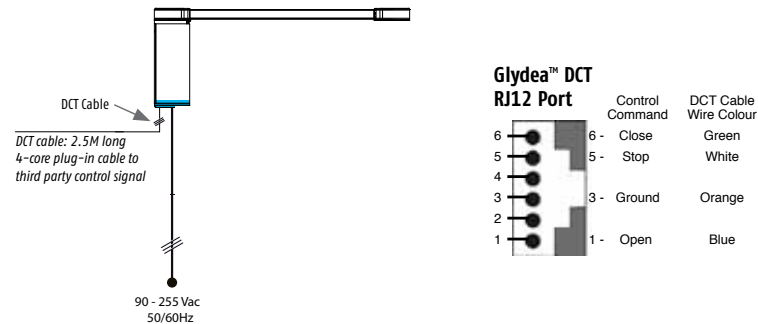
Ref. 1 870 132

- Glydea™ DCT motors are compatible with Home Automation Dry Contact Systems and Universal Infrared transmitters.

Glydea™ 60e DCT – Contact Closure Control

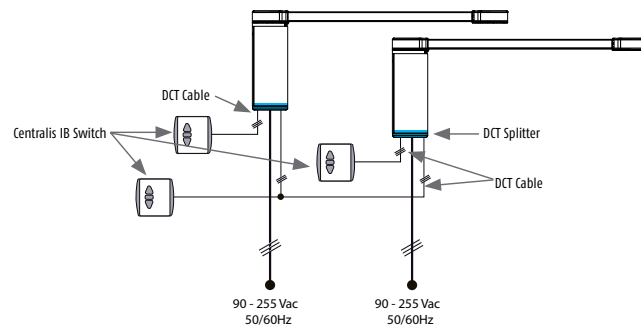
Individual control via dry volt contact closure

Glydea™ DCT motor + DCT Cable



Group & individual Switch control

Glydea™ DCT motor + DCT Cable + Dct Splitter + Centralis IB Switch



DCT Cable – 2.5M



Cable equipped with a RJ12 plug and bared wires. The RJ12 plugs directly into the Glydea™ and provides a dry contact signal option. Cable finish is white – 2.5M long.

Ref. 9 015 443

DCT Splitter



Unit equipped with 2 x RJ12 socket inputs and a 4-way screw terminal blocks to simplify wiring connections.

Ref. 9 015 442

Centralis IB



Impulse switch with contact closure output signalling suitable for connection to the Glydea™ motor.

Ref. 1 810 094

Mounting box



Surface mounting box for the Centralis IB switch. White finish.

Ref. 9 000 997

DCT setting tool



Tool for setting up the Glydea™ ready for operation. Use DCT cable (9015443) to link the setting tool to the Glydea™ motor.

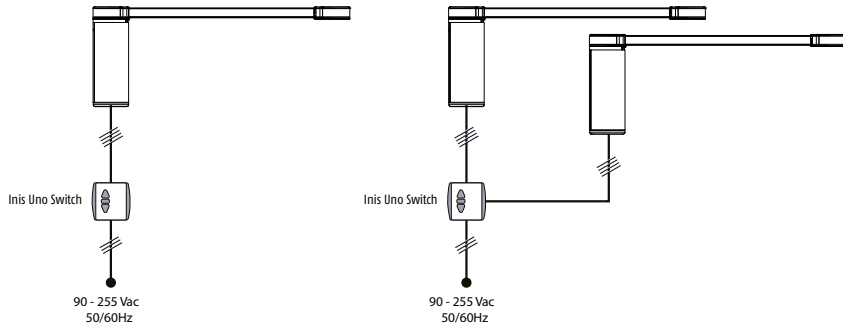
Ref. 9 014 599

- Glydea™ DCT motors are compatible with Home Automation Dry Contact Systems and Universal Infrared transmitters.

Glydea™ 60e WT – 230Vac Switched Control

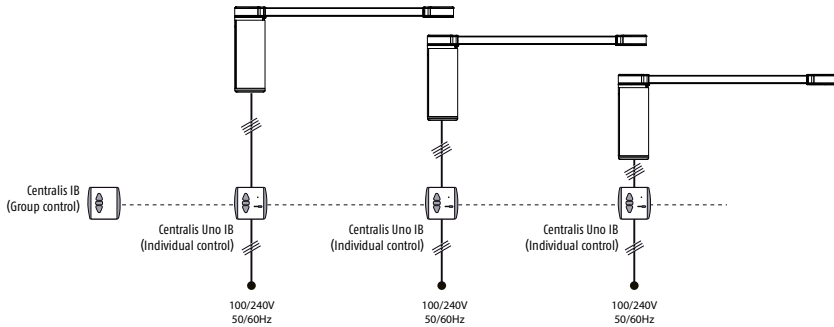
Individual control with an A/C switch

Glydea™ WT motor + Inis Uno A/C Switch



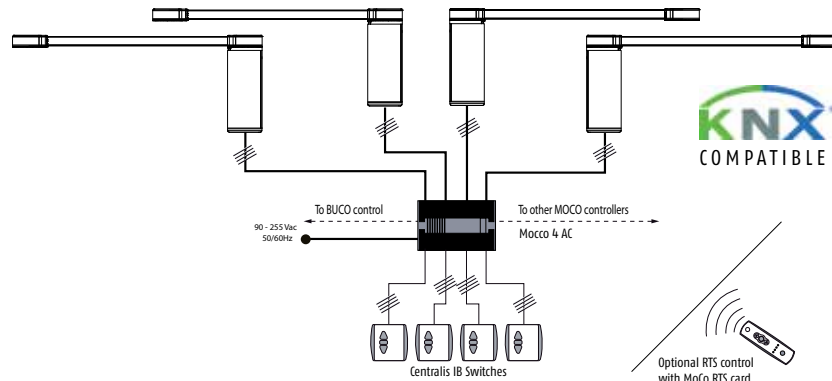
Group & Individual control with an A/C control switch

Glydea™ WT motor + Centralis Uno IB + Centralis IB



Group & Individual control with Animeo MoCo control (KNX compatible)

Glydea™ WT motor + Animeo MoCo controller + Centralis IB switches



Inis Uno



3-position A/C switch.

Momentary position: Ref. 1 800 010

Fixed position: Ref. 1 800 017

Centralis Uno IB



A/C control switch with bus line input to link multiple units for group control.

Ref. 1 810 208

Centralis IB



Impulse switch with contact closure output signalling suitable for connection to the Glydea™ motor.

Ref. 1 810 094

Mounting box



Surface mounting box for the Inis Uno and Centralis Uno IB switch. White finish.

Ref. 9 102 073

Mounting box



Surface mounting box for the Centralis IB switch. White finish.

Ref. 9 000 997

4 A/C MoCo



A/C group control unit for 4 A/C motors with multiple switch inputs to provide individual and group control. Plug in RTS card can provide radio control option.

Ref. 1 860 049

KNX 4 A/C MoCo



KNX A/C group control unit for 4 A/C motors with multiple switch inputs to provide individual and group control. Plug in RTS card can provide radio control option.

Ref. 1 860 114

4 A/C MoCo



Plug-in RTS receiver to enable 4 A/C MoCo's for radio control.

Ref. 1 860 105

CUSTOMER Tick this box if you require us to call you back to make payment arrangements.

Order #:

Company: **Contact:** **Tel.:**

Address: **Postcode:**

DELIVERY ADDRESS (if different from above) **Contact:** **Tel.:**

Address: **Postcode:**

*Customers who do not hold an account must purchase orders pro-forma via credit card / chq / bacs payment before any goods are dispatched.
Contact our Customer Services Department for more information. All prices subject to VAT and delivery charges.*

SYSTEM INFORMATION

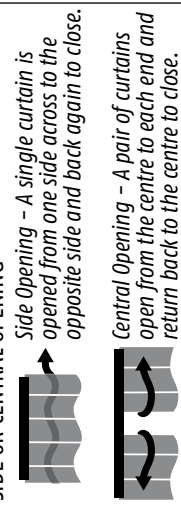
MOTOR TYPE

Glydea DCT - 3 core supply cable powered by 230vac mains and capable of RTS, Infrared and Contact Closure control.

Glydea WT - 4 core supply cable - the WT motor is hard wired into the control point and operated with a 230vac feed across the neutral and open or close directional wires.



SIDE OR CENTRAL OPENING



SYSTEM TYPE

STANDARD SYSTEM RIPPLE SYSTEM RIPPLE BUTT SYSTEM RIPPLE BUTT SYSTEM RIPPLE PITCH 48MM 54MM 60MM RIPPLE SNAP TAPE QTY - _____ M

SYSTEM SPECIFICATION

SYSTEM	RAIL LENGTH	SIDE (S) OR CENTRE (C) OPENING		MOTOR POSITION		FIXING SURFACE		BRACKET PREFERENCE		GLYDEA MOTOR	
		<input type="checkbox"/> S	<input type="checkbox"/> C	<input type="checkbox"/> LH	<input type="checkbox"/> RH	<input type="checkbox"/> CEILING	<input type="checkbox"/> WALL	<input type="checkbox"/> SWIVEL	<input type="checkbox"/> 1-TOUCH	<input type="checkbox"/> DCT	<input type="checkbox"/> WT
1	mm	<input type="checkbox"/>	<input type="checkbox"/>	<input type="checkbox"/>	<input type="checkbox"/>	<input type="checkbox"/>	<input type="checkbox"/>	<input type="checkbox"/>	<input type="checkbox"/>	<input type="checkbox"/>	<input type="checkbox"/>
2	mm	<input type="checkbox"/>	<input type="checkbox"/>	<input type="checkbox"/>	<input type="checkbox"/>	<input type="checkbox"/>	<input type="checkbox"/>	<input type="checkbox"/>	<input type="checkbox"/>	<input type="checkbox"/>	<input type="checkbox"/>
3	mm	<input type="checkbox"/>	<input type="checkbox"/>	<input type="checkbox"/>	<input type="checkbox"/>	<input type="checkbox"/>	<input type="checkbox"/>	<input type="checkbox"/>	<input type="checkbox"/>	<input type="checkbox"/>	<input type="checkbox"/>
4	mm	<input type="checkbox"/>	<input type="checkbox"/>	<input type="checkbox"/>	<input type="checkbox"/>	<input type="checkbox"/>	<input type="checkbox"/>	<input type="checkbox"/>	<input type="checkbox"/>	<input type="checkbox"/>	<input type="checkbox"/>
5	mm	<input type="checkbox"/>	<input type="checkbox"/>	<input type="checkbox"/>	<input type="checkbox"/>	<input type="checkbox"/>	<input type="checkbox"/>	<input type="checkbox"/>	<input type="checkbox"/>	<input type="checkbox"/>	<input type="checkbox"/>
6	mm	<input type="checkbox"/>	<input type="checkbox"/>	<input type="checkbox"/>	<input type="checkbox"/>	<input type="checkbox"/>	<input type="checkbox"/>	<input type="checkbox"/>	<input type="checkbox"/>	<input type="checkbox"/>	<input type="checkbox"/>
7	mm	<input type="checkbox"/>	<input type="checkbox"/>	<input type="checkbox"/>	<input type="checkbox"/>	<input type="checkbox"/>	<input type="checkbox"/>	<input type="checkbox"/>	<input type="checkbox"/>	<input type="checkbox"/>	<input type="checkbox"/>
8	mm	<input type="checkbox"/>	<input type="checkbox"/>	<input type="checkbox"/>	<input type="checkbox"/>	<input type="checkbox"/>	<input type="checkbox"/>	<input type="checkbox"/>	<input type="checkbox"/>	<input type="checkbox"/>	<input type="checkbox"/>
9	mm	<input type="checkbox"/>	<input type="checkbox"/>	<input type="checkbox"/>	<input type="checkbox"/>	<input type="checkbox"/>	<input type="checkbox"/>	<input type="checkbox"/>	<input type="checkbox"/>	<input type="checkbox"/>	<input type="checkbox"/>
10	mm	<input type="checkbox"/>	<input type="checkbox"/>	<input type="checkbox"/>	<input type="checkbox"/>	<input type="checkbox"/>	<input type="checkbox"/>	<input type="checkbox"/>	<input type="checkbox"/>	<input type="checkbox"/>	<input type="checkbox"/>

CONTROL & ACCESSORY OPTIONS

CONTROL METHOD	REF.	DESCRIPTION	QTY	REF.	DESCRIPTION	QTY	REF.	DESCRIPTION	QTY
RTS	1870172	RTS Module		1810630	Telis 1 RTS Pure		1810631	Telis 4, RTS Pure	
INFRARED	9154205	IR3 I/R Sensor		1870133	IR1 I/R Handset		1870132	IR8 I/R Handset	9014068
HARD WIRED	9015443	DCT Cable		9015442	DCT Splitter		9014577	DCT Setting Tool	
BRACKETS	1780906	Swivel Bracket		1780907	1-touch Bracket		1781907	Plate Bracket	1780909
STANDARD	1780895	Curtain Hook		1781415	Runner				
RIPPLE	1780905	Curtain Hook		1780901	Runner - 48mm		1780902	Runner - 54mm	1780903
OTHER									

Customer (print name)..... **Customer (signature)**.....
 By completing and submitting this order form, you are placing an order for a made to measure Glydea™ system and accept that the specification entered for the system is correct based on your project requirements. Somfy Ltd declines all liability for issues that arise with a Glydea™ system that does not meet the project requirements due to the specification submitted.
 Date...../...../.....

CUSTOMER Tick this box if you require us to call you back to make payment arrangements.

Order #:

Company: Contact: Tel.:

Address: Postcode:

DELIVERY ADDRESS (if different from above) Contact: Tel.:

Address: Postcode:

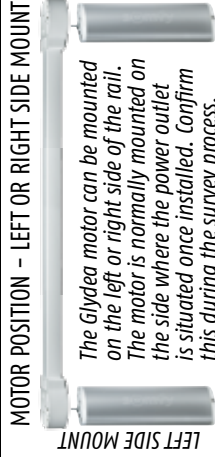
Customers who do not hold an account must purchase orders pro-forma via credit card / chq / bank payment before any goods are dispatched.
Contact our Customer Services Department for more information. All prices subject to VAT and delivery charges.

SYSTEM INFORMATION

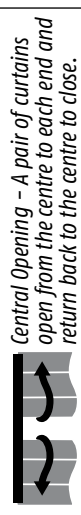
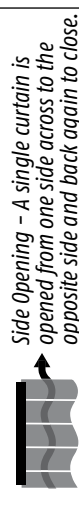
MOTOR TYPE

Glydea DCT - 3 core supply cable powered by 230vac mains and capable of RTS, Infrared and Contact Closure control.

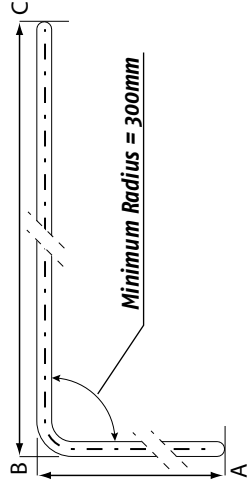
Glydea WT - 4 core supply cable - the WT motor is hard wired into the control point and operated with a 230vac feed across the neutral and open or close directional wires.



SIDE OR CENTRAL OPENING



'L' SHAPED RAIL FOR A BAY AREA



Minimum Rail Length
Between points A & B: **400mm** Between points B & C: **400mm**
Maximum Overall Rail Length: 10M

With reference to the motor position relative to the 'L' shaped track:

- When specifying left hand mount, the motor will be positioned at point 'A'.
 - When specifying right hand mount, the motor will be positioned at point 'C'.
- (the drawing relates to viewing the rail from above - when installed and ceiling mounted, position 'C' will be on the right side when viewing the rail from the front).

SYSTEM TYPE

STANDARD SYSTEM RIPPLE SYSTEM RIPPLE BUTT SYSTEM RIPPLE PITCH 48MM 54MM 60MM RIPPLE SNAP TAPE QTY - _____ M

SYSTEM SPECIFICATION

SYSTEM	LENGTH: A-B	LENGTH: B-C	CURVE RADIUS	SIDE (S) OR CENTRE (C) OPENING		MOTOR POSITION		FIXING SURFACE		BRACKET PREFERENCE		GLYDEA MOTOR	
				S	C	LH	RH	CEILING	WALL	SWIVEL	1-TOUCH	DCT	WT
1	mm	mm	mm	<input type="checkbox"/>	<input type="checkbox"/>	<input type="checkbox"/>	<input type="checkbox"/>	<input type="checkbox"/>	<input type="checkbox"/>	<input type="checkbox"/>	<input type="checkbox"/>	<input type="checkbox"/>	<input type="checkbox"/>
2	mm	mm	mm	<input type="checkbox"/>	<input type="checkbox"/>	<input type="checkbox"/>	<input type="checkbox"/>	<input type="checkbox"/>	<input type="checkbox"/>	<input type="checkbox"/>	<input type="checkbox"/>	<input type="checkbox"/>	<input type="checkbox"/>
3	mm	mm	mm	<input type="checkbox"/>	<input type="checkbox"/>	<input type="checkbox"/>	<input type="checkbox"/>	<input type="checkbox"/>	<input type="checkbox"/>	<input type="checkbox"/>	<input type="checkbox"/>	<input type="checkbox"/>	<input type="checkbox"/>
4	mm	mm	mm	<input type="checkbox"/>	<input type="checkbox"/>	<input type="checkbox"/>	<input type="checkbox"/>	<input type="checkbox"/>	<input type="checkbox"/>	<input type="checkbox"/>	<input type="checkbox"/>	<input type="checkbox"/>	<input type="checkbox"/>
5	mm	mm	mm	<input type="checkbox"/>	<input type="checkbox"/>	<input type="checkbox"/>	<input type="checkbox"/>	<input type="checkbox"/>	<input type="checkbox"/>	<input type="checkbox"/>	<input type="checkbox"/>	<input type="checkbox"/>	<input type="checkbox"/>

CONTROL & ACCESSORY OPTIONS

CONTROL METHOD	REF.	DESCRIPTION	QTY	REF.	DESCRIPTION	QTY	REF.	DESCRIPTION	QTY	REF.	DESCRIPTION	QTY
RTS	1870172	RTS Module		1810630	Telis 1 RTS Pure		1810631	Telis 4 RTS Pure				
INFRARED	9154205	IR3 I/R Sensor		1870133	IR1 I/R Handset		1870132	IR8 I/R Handset		9014068	R12 to R19 Adapter	
HARD WIRED	9015443	DCT Cable		9015442	DCT Splitter		9014577	DCT Setting Tool				
BRACKETS	1780906	Swivel Bracket		1780907	1-touch Bracket		1781907	Plate Bracket		1780909	Wall Mint Bracket	
STANDARD	1780895	Curtain Hook		1781415	Runner							
RIPPLE	1780905	Curtain Hook		1780901	Runner - 48mm		1780902	Runner - 54mm		1780903	Runner - 60mm	
OTHER												

Customer (print name)..... Customer (signature).....

By completing and submitting this order form, you are placing an order for a made to measure Glydea™ system and accept that the specification entered for the system is correct based on your project requirements. Somfy Ltd declines all liability for issues that arise with a Glydea™ system that does not meet the project requirements due to the specification submitted.

Date...../...../.....

CUSTOMER Tick this box if you require us to call you back to make payment arrangements.

Order #:.....
Company:..... **Contact:**..... **Tel.:**.....
Address:..... **Postcode:**.....

DELIVERY ADDRESS (if different from above) **Contact:**..... **Tel.:**.....
Address:..... **Postcode:**.....

*Customers who do not hold an account must purchase orders pro-forma via credit card / cheq / bacs payment before any goods are dispatched.
Contact our Customer Services Department for more information. All prices subject to VAT and delivery charges.*

SYSTEM INFORMATION

MOTOR TYPE

Glydea DCT - 3 core supply cable powered by 230vac mains and capable of RTS, Infra-red and Contact Closure control.

Glydea WT - 4 core supply cable - the WT motor is hard wired into the control point and operated with a 230vac feed across the neutral and open or close directional wires.

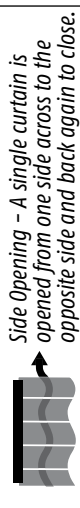
MOTOR POSITION - LEFT OR RIGHT SIDE MOUNT

LEFT SIDE MOUNT

The Glydea motor can be mounted on the left or right side of the rail. The motor is normally mounted on the side where the power outlet is situated once installed. Confirm this during the survey process.

RIGHT SIDE MOUNT

SIDE OR CENTRAL OPENING

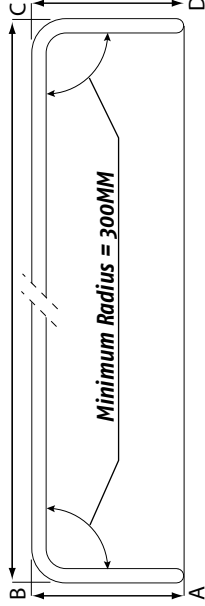


Side Opening - A single curtain is opened from one side across to the opposite side and back again to close.



Central Opening - A pair of curtains open from the centre to each end and return back to the centre to close.

'U' SHAPED RAIL FOR A RECTANGULAR BAY



Minimum Rail Length
Between points A & B / C & D: **400mm** Between points B & C: **600mm**

Maximum Overall Rail Length: 10.14M
The 'U' shaped rail will have 2 x 90° bends formed with a 300mm radius. With reference to the motor position relative to the 'U' shaped track:

- When specifying left hand mount, the motor will be positioned at point 'A'.
- When specifying right hand mount, the motor will be positioned at point 'D'.
- (The drawing relates to viewing the rail from above - when installed and ceiling mounted, position 'D' will be on the right side when viewing the rail from the front).

SYSTEM TYPE

STANDARD SYSTEM RIPPLE SYSTEM RIPPLE BUTT SYSTEM RIPPLE PITCH 48MM 54MM 60MM RIPPLE SNAP TAPE QTY - _____ M

SYSTEM SPECIFICATION

SYSTEM	LENGTH: A-B	LENGTH: B-C	LENGTH: C-D	SIDE (S) OR CENTRE (C) OPENING		MOTOR POSITION		FIXING SURFACE		BRACKET PREFERENCE		GLYDEA MOTOR	
				<input type="checkbox"/> S	<input type="checkbox"/> C	<input type="checkbox"/> LH	<input type="checkbox"/> RH	<input type="checkbox"/> CEILING	<input type="checkbox"/> WALL	<input type="checkbox"/> SWIVEL	<input type="checkbox"/> 1-TOUCH	<input type="checkbox"/> DCT	<input type="checkbox"/> WT
1	mm	mm	mm	<input type="checkbox"/>	<input type="checkbox"/>	<input type="checkbox"/>	<input type="checkbox"/>	<input type="checkbox"/>	<input type="checkbox"/>	<input type="checkbox"/>	<input type="checkbox"/>	<input type="checkbox"/>	<input type="checkbox"/>
2	mm	mm	mm	<input type="checkbox"/>	<input type="checkbox"/>	<input type="checkbox"/>	<input type="checkbox"/>	<input type="checkbox"/>	<input type="checkbox"/>	<input type="checkbox"/>	<input type="checkbox"/>	<input type="checkbox"/>	<input type="checkbox"/>
3	mm	mm	mm	<input type="checkbox"/>	<input type="checkbox"/>	<input type="checkbox"/>	<input type="checkbox"/>	<input type="checkbox"/>	<input type="checkbox"/>	<input type="checkbox"/>	<input type="checkbox"/>	<input type="checkbox"/>	<input type="checkbox"/>
4	mm	mm	mm	<input type="checkbox"/>	<input type="checkbox"/>	<input type="checkbox"/>	<input type="checkbox"/>	<input type="checkbox"/>	<input type="checkbox"/>	<input type="checkbox"/>	<input type="checkbox"/>	<input type="checkbox"/>	<input type="checkbox"/>
5	mm	mm	mm	<input type="checkbox"/>	<input type="checkbox"/>	<input type="checkbox"/>	<input type="checkbox"/>	<input type="checkbox"/>	<input type="checkbox"/>	<input type="checkbox"/>	<input type="checkbox"/>	<input type="checkbox"/>	<input type="checkbox"/>

CONTROL & ACCESSORY OPTIONS

CONTROL METHOD	REF.	DESCRIPTION	QTY	REF.	DESCRIPTION	QTY	REF.	DESCRIPTION	QTY
RTS	1870172	RTS Module		1810630	Telis 1 RTS Pure		1810631	Telis 4, RTS Pure	
INFRARED	9154205	IR3 I/R Sensor		1870133	IR1 I/R Handset		1870132	IR8 I/R Handset	9014068
HARD WIRED	9015443	DCT Cable		9015442	DCT Splitter		9014577	DCT Setting Tool	
BRACKETS	1780906	Swivel Bracket		1780907	1-touch Bracket		1781907	Plate Bracket	1780909
STANDARD	1780895	Curtain Hook		1781415	Runner				
RIPPLE	1780905	Curtain Hook		1780901	Runner - 4.8mm		1780902	Runner - 5.4mm	1780903
OTHER									

Customer (print name)..... **Customer** (signature).....

Date...../...../.....
By completing and submitting this order form, you are placing an order for a made to measure Glydea™ system and accept that the specification entered for the system is correct based on your project requirements. Somfy Ltd declines all liability for issues that arise with a Glydea™ system that does not meet the project requirements due to the specification submitted.

CUSTOMER Tick this box if you require us to call you back to make payment arrangements.

Order #:

Company:

Tel.:

Address:

Postcode:

DELIVERY ADDRESS (if different from above)

Contact:

Tel.:

Address:

Postcode:

*Customers who do not hold an account must purchase orders pro-forma via credit card / chq / banc payment before any goods are dispatched.
Contact our Customer Services Department for more information. All prices subject to VAT and delivery charges.*

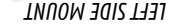
SYSTEM INFORMATION

MOTOR TYPE

Glydea DCT - 3 core supply cable powered by 230vac mains and capable of RTS, Infrared and Contact Closure control.

Glydea WT - 4 core supply cable - the WT motor is hard wired into the control point and operated with a 230vac feed across the neutral and open or close directional wires.

MOTOR POSITION - LEFT OR RIGHT SIDE MOUNT



LEFT SIDE MOUNT

The Glydea motor can be mounted on the left or right side of the rail. The motor is normally mounted on the side where the power outlet is situated once installed. Confirm this during the survey process.

SIDE OR CENTRAL OPENING



Side Opening - A single curtain is opened from one side across to the opposite side and back again to close.



Central Opening - A pair of curtains open from the centre to each end and return back to the centre to close.

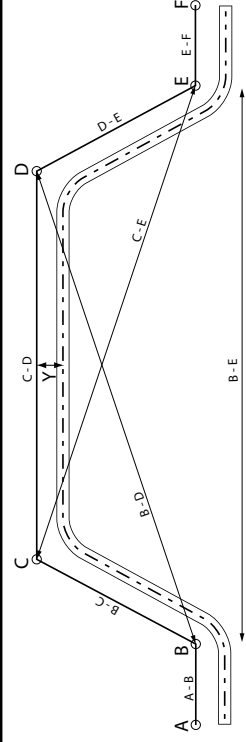
Minimum Rail Length Between points A & B / C & D: **400mm** Between points B & C: **600mm**

Maximum Overall Rail Length: 10M

With reference to the motor position relative to the angular shaped track (based on viewing the track inside the bay area):

· When specifying left hand mount, the motor will be positioned at point 'A or B'. · When specifying right hand mount, the motor will be positioned at point 'E or F'.

ANGULAR BAY



Ignore points A-B & E-F if these rail sections are not required.

MEASUREMENTS

A to B:	mm	B to C:	mm
B to D:	mm	B to E:	mm
C to D:	mm	C to E:	mm
D to E:	mm	E to F:	mm
Y:	mm		

Comments:

SYSTEM TYPE

STANDARD SYSTEM
 RIPPLE SYSTEM
 RIPPLE BUTT SYSTEM
 RIPPLE PITCH
 48MM
 54MM
 60MM
 RIPPLE SNAP TAPE QTY - _____ M

SYSTEM SPECIFICATION

SIDE OR CENTRAL OPENING	MOTOR POSITION		FIXING SURFACE		BRACKET PREFERENCE		GLYDEA MOTOR		
	<input type="checkbox"/> SIDE	<input type="checkbox"/> CENTRAL	<input type="checkbox"/> LEFT	<input type="checkbox"/> RIGHT	<input type="checkbox"/> CEILING	<input type="checkbox"/> WALL	<input type="checkbox"/> SWIVEL	<input type="checkbox"/> 1-TOUCH	<input type="checkbox"/> DCT

CONTROL & ACCESSORY OPTIONS

CONTROL METHOD	REF.	DESCRIPTION	QTY	REF.	DESCRIPTION	QTY	REF.	DESCRIPTION	QTY
RTS	1870172	RTS Module		1810630	Telis 1 RTS Pure		1810631	Telis 4 RTS Pure	
INFRARED	9154205	IR3 I/R Sensor		1870133	IR1 I/R Handset		1870132	IR8 I/R Handset	9014068
HARD WIRED	9015443	DCT Cable		9015442	DCT Splitter		9014577	DCT Setting Tool	
BRACKETS	1780906	Swivel Bracket		1780907	1-touch Bracket		1781907	Plate Bracket	1780909
STANDARD	1780895	Curtain Hook		1781415	Runner				
RIPPLE	1780905	Curtain Hook		1780901	Runner - 48mm		1780902	Runner - 54mm	1780903
OTHER									

Customer (print name)..... Customer (signature).....

Date...../...../.....
By completing and submitting this order form, you are placing an order for a made to measure Glydea™ system and accept that the specification entered for the system is correct based on your project requirements. Somfy Ltd declines all liability for issues that arise with a Glydea™ system that does not meet the project requirements due to the specification submitted.

CUSTOMER Tick this box if you require us to call you back to make payment arrangements.

Order #:.....
Company:.....
Tel.:.....
Address:.....
Postcode:.....

Contact:.....
DELIVERY ADDRESS (if different from above) **Contact:**.....
Tel.:.....
Postcode:.....

*Customers who do not hold an account must purchase orders pro-forma via credit card / chq / bacs payment before any goods are dispatched.
Contact our Customer Services Department for more information. All prices subject to VAT and delivery charges.*

SYSTEM INFORMATION

MOTOR TYPE

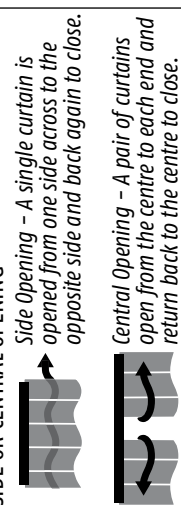
Glydea DCT - 3 core supply cable powered by 230vac mains and capable of RTS, Infrared and Contact Closure control.

Glydea WT - 4 core supply cable - the WT motor is hard wired into the control point and operated with a 230vac feed across the neutral and open or close directional wires.



The Glydea motor can be mounted on the left or right side of the rail. The motor is normally mounted on the side where the power outlet is situated once installed. Confirm this during the survey process.

SIDE OR CENTRAL OPENING

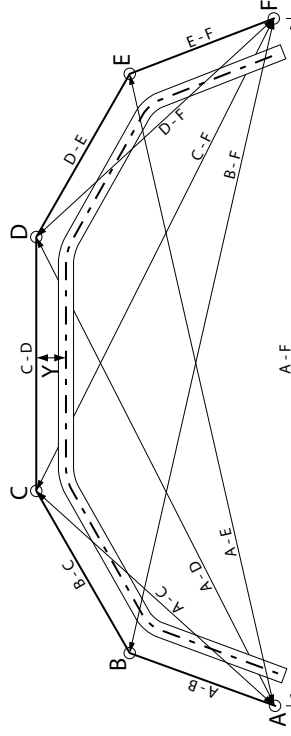


Side Opening - A single curtain is opened from one side across to the opposite side and back again to close.
Central Opening - A pair of curtains open from the centre to each end and return back to the centre to close.

Maximum Overall Rail Length: 8M

With reference to the motor position relative to the angular shaped track (based on viewing the track inside the bay area):
· When specifying left hand mount, the motor will be positioned at point 'A'.
· When specifying right hand mount, the motor will be positioned at point 'F'.

ANGULAR BAY



MEASUREMENTS

A to B:	mm	B to F:	mm
A to C:	mm	C to D:	mm
A to D:	mm	C to F:	mm
A to E:	mm	D to E:	mm
A to F:	mm	D to F:	mm
B to C:	mm	E to F:	mm
Y:	mm		

Comments:

SYSTEM TYPE

STANDARD SYSTEM RIPPLE SYSTEM RIPPLE BUTT SYSTEM RIPPLE PITCH 48MM 54MM 60MM RIPPLE SNAP TAPE QTY - _____ M

SYSTEM SPECIFICATION

SIDE OR CENTRAL OPENING	MOTOR POSITION		FIXING SURFACE		BRACKET PREFERENCE		GLYDEA MOTOR		
	<input type="checkbox"/> SIDE	<input type="checkbox"/> CENTRAL	<input type="checkbox"/> LEFT	<input type="checkbox"/> RIGHT	<input type="checkbox"/> CEILING	<input type="checkbox"/> WALL	<input type="checkbox"/> SWIVEL	<input type="checkbox"/> 1-TOUCH	<input type="checkbox"/> DCT

CONTROL & ACCESSORY OPTIONS

CONTROL METHOD	REF.	DESCRIPTION	QTY	REF.	DESCRIPTION	QTY	REF.	DESCRIPTION	QTY
RTS	1870172	RTS Module		1810631	Telis 4, RTS Pure				
INFRARED	9154205	IR3 I/R Sensor		1870132	IR8 I/R Handset		9014068	R12 to R19 Adapter	
HARD WIRED	9015443	DCT Cable		9014577	DCT Setting Tool				
BRACKETS	1780906	Swivel Bracket		1781907	Plate Bracket		1780909	Wall Mint Bracket	
STANDARD	1780895	Curtain Hook		1781415	Runner				
RIPPLE	1780905	Curtain Hook		1780902	Runner - 48mm		1780903	Runner - 60mm	
OTHER									

Customer (print name)..... Customer (signature).....
By completing and submitting this order form, you are placing an order for a made to measure Glydea™ system and accept that the specification entered for the system is correct based on your project requirements. Somfy Ltd declines all liability for issues that arise with a Glydea™ system that does not meet the project requirements due to the specification submitted.
Date...../...../.....

CUSTOMER Tick this box if you require us to call you back to make payment arrangements.

Order #:

Company: **Contact:** **Tel.:**

Address: **Postcode:**

DELIVERY ADDRESS (if different from above) **Contact:** **Tel.:**

Address: **Postcode:**

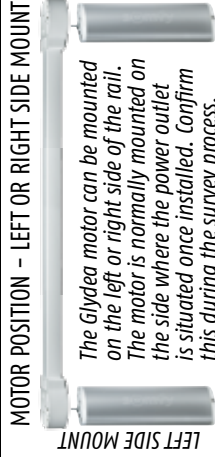
*Customers who do not hold an account must purchase orders pro-forma via credit card / chq / banc payment before any goods are dispatched.
Contact our Customer Services Department for more information. All prices subject to VAT and delivery charges.*

SYSTEM INFORMATION

MOTOR TYPE

Glydea DCT - 3 core supply cable powered by 230Vac mains and capable of RTS, Infrared and Contact Closure control.

Glydea WT - 4 core supply cable - the WT motor is hard wired into the control point and operated with a 230Vac feed across the neutral and open or close directional wires.



The Glydea motor can be mounted on the left or right side of the rail. The motor is normally mounted on the side where the power outlet is situated once installed. Confirm this during the survey process.

SIDE OR CENTRAL OPENING

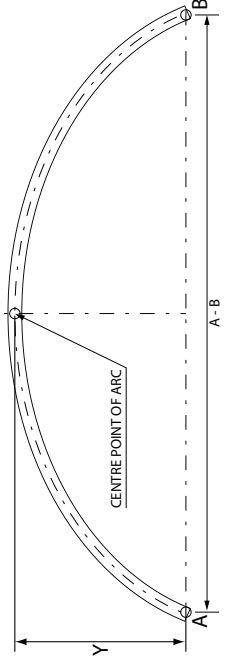


Side Opening - A single curtain is opened from one side across to the opposite side and back again to close.



Central Opening - A pair of curtains open from the centre to each end and return back to the centre to close.

CONTINUOUS CURVED RAIL FOR A SEMI-CIRCULAR BAY



Minimum Rail Length
Between points A & B: **600mm** Length Y: **300mm**
Maximum Overall Rail Length: 8860mm
Maximum curved radius: 300mm

Motor position:

- When specifying left hand mount, the motor will be positioned at point 'A'.
- When specifying right hand mount, the motor will be positioned at point 'B'.
- (the drawing relates to viewing the rail from above - when installed and ceiling mounted, position 'B' will be on the right side when viewing the rail from the front).

Measurement point A to B is the horizontal length across the window bay area.

SYSTEM TYPE

STANDARD SYSTEM RIPPLE SYSTEM RIPPLE BUTT SYSTEM RIPPLE PITCH 48MM 54MM 60MM RIPPLE SNAP TAPE QTY - _____ M

SYSTEM SPECIFICATION

SYSTEM	LENGTH: A-B	LENGTH: Y	SIDE (S) OR CENTRE (C) OPENING		MOTOR POSITION		FIXING SURFACE		BRACKET PREFERENCE		GLYDEA MOTOR	
			<input type="checkbox"/> S	<input type="checkbox"/> C	<input type="checkbox"/> LH	<input type="checkbox"/> RH	<input type="checkbox"/> CEILING	<input type="checkbox"/> WALL	<input type="checkbox"/> SWIVEL	<input type="checkbox"/> 1-TOUCH	<input type="checkbox"/> DCT	<input type="checkbox"/> WT
1	mm	mm	<input type="checkbox"/>	<input type="checkbox"/>	<input type="checkbox"/>	<input type="checkbox"/>	<input type="checkbox"/>	<input type="checkbox"/>	<input type="checkbox"/>	<input type="checkbox"/>	<input type="checkbox"/>	<input type="checkbox"/>
2	mm	mm	<input type="checkbox"/>	<input type="checkbox"/>	<input type="checkbox"/>	<input type="checkbox"/>	<input type="checkbox"/>	<input type="checkbox"/>	<input type="checkbox"/>	<input type="checkbox"/>	<input type="checkbox"/>	<input type="checkbox"/>
3	mm	mm	<input type="checkbox"/>	<input type="checkbox"/>	<input type="checkbox"/>	<input type="checkbox"/>	<input type="checkbox"/>	<input type="checkbox"/>	<input type="checkbox"/>	<input type="checkbox"/>	<input type="checkbox"/>	<input type="checkbox"/>
4	mm	mm	<input type="checkbox"/>	<input type="checkbox"/>	<input type="checkbox"/>	<input type="checkbox"/>	<input type="checkbox"/>	<input type="checkbox"/>	<input type="checkbox"/>	<input type="checkbox"/>	<input type="checkbox"/>	<input type="checkbox"/>
5	mm	mm	<input type="checkbox"/>	<input type="checkbox"/>	<input type="checkbox"/>	<input type="checkbox"/>	<input type="checkbox"/>	<input type="checkbox"/>	<input type="checkbox"/>	<input type="checkbox"/>	<input type="checkbox"/>	<input type="checkbox"/>

CONTROL & ACCESSORY OPTIONS

CONTROL METHOD	REF.	DESCRIPTION	QTY	REF.	DESCRIPTION	QTY	REF.	DESCRIPTION	QTY	DESCRIPTION	QTY
RTS	1870172	RTS Module		1810630	Telis 1 RTS Pure		1810631	Telis 4 RTS Pure			
INFRARED	9154205	IR3 I/R Sensor		1870133	IR1 I/R Handset		1870132	IR8 I/R Handset		9014068	R12 to R19 Adapter
HARD WIRED	9015443	DCT Cable		9015442	DCT Splitter		9014577	DCT Setting Tool			
BRACKETS	1780906	Swivel Bracket		1780907	1-touch Bracket		1781907	Plate Bracket		1780909	Wall Mint Bracket
STANDARD	1780895	Curtain Hook		1781415	Runner						
RIPPLE	1780905	Curtain Hook		1780901	Runner - 48mm		1780902	Runner - 54mm		1780903	Runner - 60mm
OTHER											

Customer (print name)..... **Customer (signature)**.....

Date...../...../.....
By completing and submitting this order form, you are placing an order for a made to measure Glydea™ system and accept that the specification entered for the system is correct based on your project requirements. Somfy Ltd declines all liability for issues that arise with a Glydea™ system that does not meet the project requirements due to the specification submitted.

SOMFY LTD

Leeds Office

Moorfield Road

Yeadon

Leeds

West Yorkshire

T 0113 391 3030

F 0113 391 3010

www.somfy.co.uk

London Office

Unit 218 / 219 Business Design Centre

52 Upper Street

Islington

London

T 0207 288 6038

F 0207 288 6040

www.somfyarchitecture.co.uk

www.somfysmarthome.co.uk